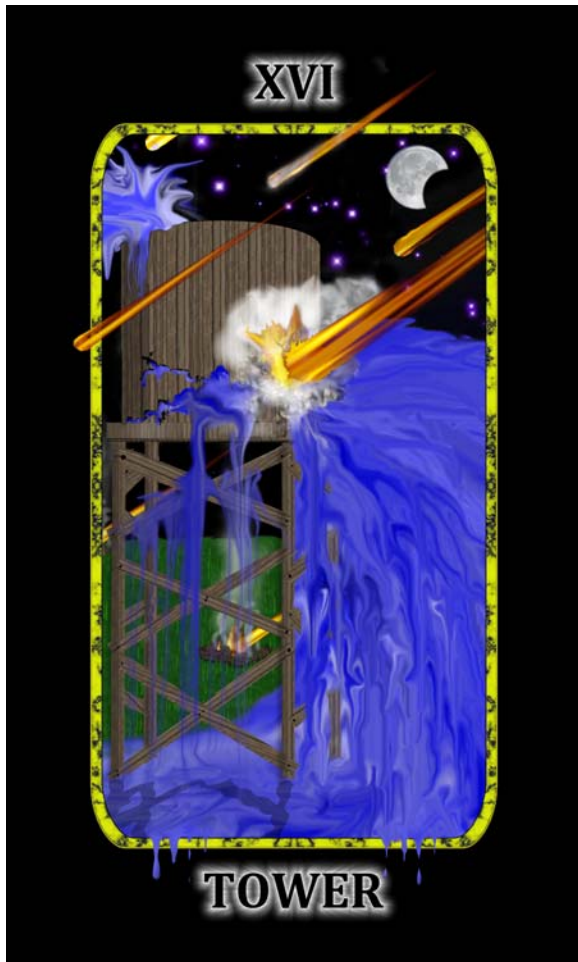


The Tower — *Tiptoeing Through the Tarot - September 21, 2013*



The Tower – XVI – (The Ecliptic Tarot) The Universe sends a fiery message that destroys the foundation of the tower, flooding the area with the precious store of water.

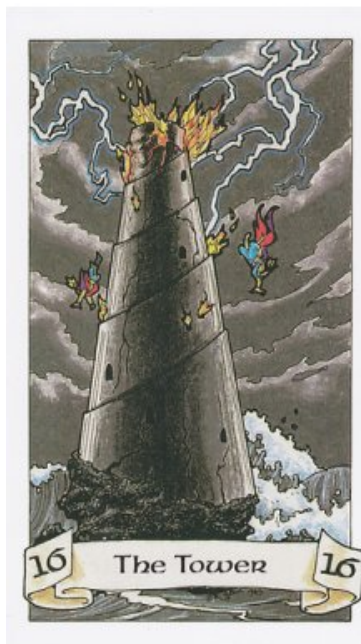
Meteors rain down from the heavens creating chaos and mayhem. The tower's flimsy man-made foundation cannot withstand such an onslaught. People who depend on this water supply will be left in dire need to not only replenish their supply of water, but also to rebuild their tower with a stronger foundation. As devastating as this is, they know they must rebuild on a much stronger foundation to help prevent this catastrophe from happening again.

When an occurrence shakes our very foundations, leaving us to feel helpless and like things are out of our control, these are our Tower moments. The destruction shown in the card is an extreme, but it demonstrates how devastating these tower-moments can feel. The old expression comes to mind, "...not leaving you

a leg to stand on" when someone describes a life changing event they have either experienced or witnessed.

These events are individually personalized for each of us. My perception of how much an event shakes my foundations will probably differ from yours. What some would see as a major inconvenience, others might perceive as a catastrophe. Either way, once the dust has settled or the mud dries, in our case, what is left can be fortified and made stronger. As it turns out, it is really a blessing in disguise. ~Bob & Koneta Bailey

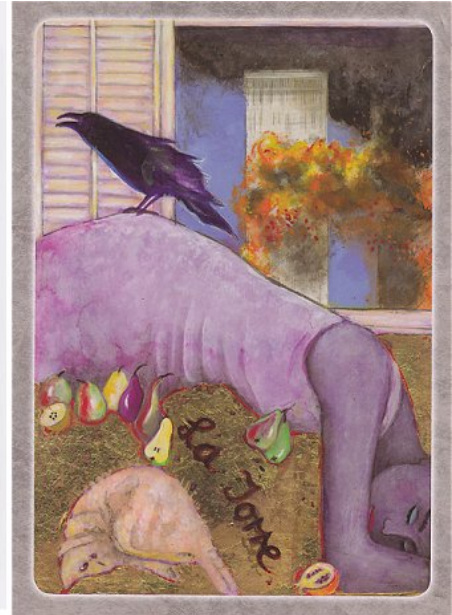
**decks used: Legacy of the Divine Tarot by Ciro Marchetti, The Gaian Tarot by Joanna Powell Colbert, The Steampunk Tarot by Barbara Moore, Robin Wood Tarot by Robin Wood, Paulina Tarot by Paulina Cassidy, Ancestral Path Tarot Deck by Julie Cuccia-Watts, The Hobbit Tarot by Terry Donaldson, Twilight Realm- A Tarot of Faery by Beth Wilder, The Secret Language of Birds by Adele Nozedar*



The Robin Wood Tarot: (Llewellyn Publications) Sudden change, broken friendships, destruction, security lost, a disgrace. Catastrophic transformation.

Twilight Realm-A Tarot of Faery: (Schiffer Publishing, Ltd.) Destruction. Upheaval of one's accustomed way to life. Enlightenment in the wake of sudden catastrophe. The appearance of this card in a reading may indicate upheaval in one's life – unexpected, and perhaps devastating occurrences that seem to be of disastrous proportions to the individual. Take heart, however, in the awareness that new knowledge and a new outlook may be gained from the loss.

Paulina Tarot: (U.S. Games Systems, Inc.) As the tower crumbles the phoenixes collect pieces to rebuild their lives. The falling gentleman has a sudden burst of insight as he focuses his attention on a jewel. The stone dragon has survived centuries of disruptions yet continues to guard his homestead. The red door reminds us that good fortune can emerge from chaos. Sudden disruptions, reversal in fortune, loss, emotional outbursts, a flash of insight, acceptance of sudden change.



The Steampunk Tarot: (Llewellyn Publications) An unexpected event that changes everything. When the Tower blasts its way into your life, batten down the hatches and prepare for a rough time. The real work begins after the crash. Look at what was destroyed, and let it go. More importantly, look at what remains. It has survived a trial by fire; make sure you recognize its value. Pick it up and plan on fitting it into your new structure. This is the universe's idea of repurposing.

Ancestral Path Tarot Deck: (U.S. Games Systems, Inc.) Unexpected, total, sudden change; breaking down old beliefs; a sudden event that destroys one's foundations or basic beliefs. Time to rebuild from the ruins of the past. The breakdown of matter to its essential elements. Catastrophic events; events that the individual has no control over except in how he or she will respond to them.

The Secret Language of Birds: (Schiffer Publishing, Ltd.) A sudden or shocking event, change, deception, illumination, realization, awakening, intelligence, destruction and creation. The destruction of a tower is a momentous event, shocking, calamitous, everything turned upside down and destroyed. When this symbolic tower is swept away, the foundations that are exposed are a reminder of the real meaning of life and what's important.



The Gaian Tarot: (Llewellyn Publications) Get ready, because life as you have known it may be in for a sudden, radical change. It may be an epiphany or a flash of insight that totally revises the way you look at the world. It may be an emotional breakthrough. Or it may be an upheaval in your life or in the world around you. Something taken for granted—whether good or ill—is teetering on a precipice.

Legacy of the Divine Tarot: (Llewellyn Publications) A wake-up call. Assumptions we made, truths we assumed, superficial values we embraced – all seemed so strong and unquestioned, yet in an instant they were laid bare. The foundations on which these values were based proved fragile. There is fear and despair in this realization; our world has been shaken and we are left with no alternative other than to accept this new reality. Now we must have the courage to acknowledge and accept the loss, learn from it, and take strength from the rebuilding on those ruins in the future, with stronger values.

The Hobbit Tarot: (U.S. Games Systems, Inc.) The need to build on solid foundations, suddenly realizing the truth about someone, or something, massive upheaval, sudden trauma. This card shows sudden change coming from outside forces. This card tells us that it is better to accept these changes rather than resist them. Acceptance is a better response than opposition.